

CONTENTS

1. EARTHQUAKE
2. LANDSLIDE
3. HAILSTORM
4. THUNDERSTORM AND LIGHTNING
5. WINDSTORM
6. CLOUD BURST AND FLASH FLOOD
7. CYCLONE
8. AVALANCHE
9. DROUGHT
10. FIRE
11. ROAD ACCIDENT

EARTHQUAKE



Earthquakes are the shaking, rolling or sudden shock of the earth's surface. Earthquakes can be felt over large areas, although they usually last less than one minute. Earthquakes cannot be predicted — although scientists are working on it!

WHAT YOU SHOULD DO

If you are **INSIDE**



If you are **OUTSIDE**
Move away from buildings



Move away from street lights



Do not run

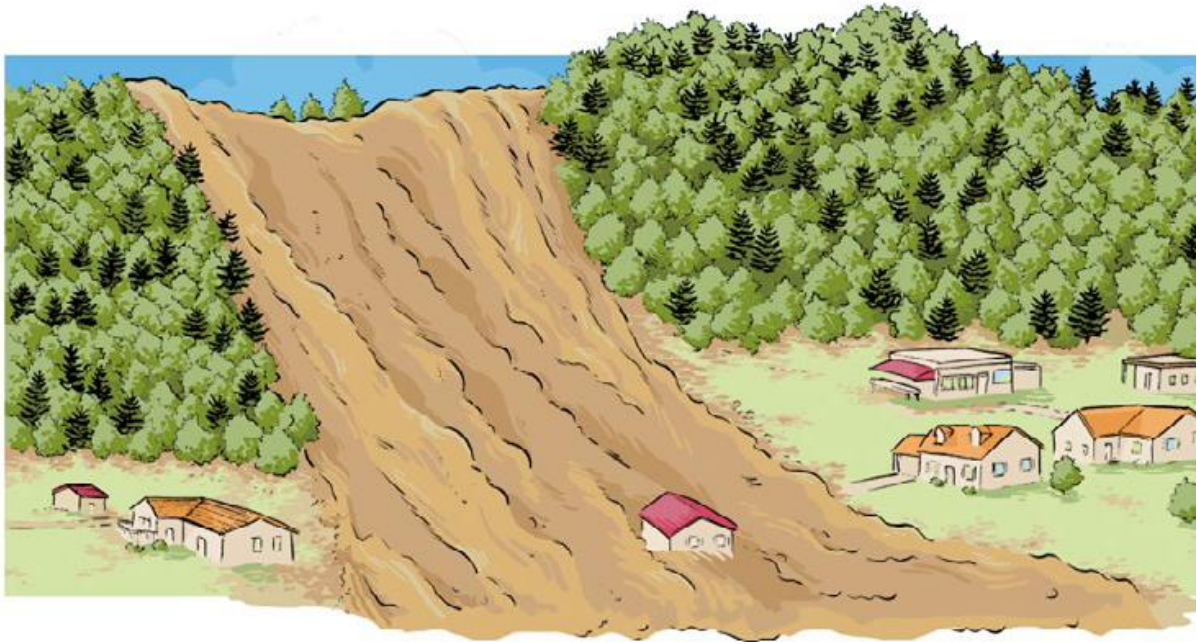
WHAT YOU SHOULD NOT DO



Do not use lifts and elevators



LANDSLIDE



Landslides take place when dirt, pebbles, rocks and boulders slide down a slope together. Landslides can occur in any area, although some areas are more prone to landslides. Landslides could be triggered by a number of different causes such as earthquake, heavy rainfall, soil erosion, etc.

WHAT YOU SHOULD DO ✓

During monsoons always be alert

Listen to any sound of falling trees, boulders, etc



WHAT YOU SHOULD NOT DO



- Do not touch loose wires
- Do not go near a slide area



HAILSTORM



Hailstones are balls or irregular lumps of ice that fall from the sky. A storm of hailstones is known as hailstorm. If you are caught in a hailstorm, you could be injured seriously. Hailstorm also damage crops.

WHAT YOU SHOULD DO



Stay indoors
Take shelter if you are outside

WHAT YOU SHOULD NOT DO



Do not go outside
If you are in a moving vehicle
ask the driver to stop the car

THUNDERSTORM AND LIGHTNING



A storm with lightning and thunder is known as **thunderstorm**. The bright flash of electricity produced during a thunderstorm is known as **lightning**. The sound caused by lightning is known as **thunder**. All thunderstorms are dangerous because every thunderstorm produces lightning which can kill or seriously hurt people.

WHAT YOU SHOULD DO



Stay indoors
Switch off all electric points
and appliances
Keep away from loose electric
wires

WHAT YOU SHOULD NOT DO



Do not stand under tall trees
or electric poles
Do not lean against concrete
poles
Do not touch any metal –
fence, cycles, etc

WINDSTORM



Wind is air in motion. A **windstorm** is just a storm with high winds or violent gusts but little or no rain. Windstorms may cause damage to life and property.

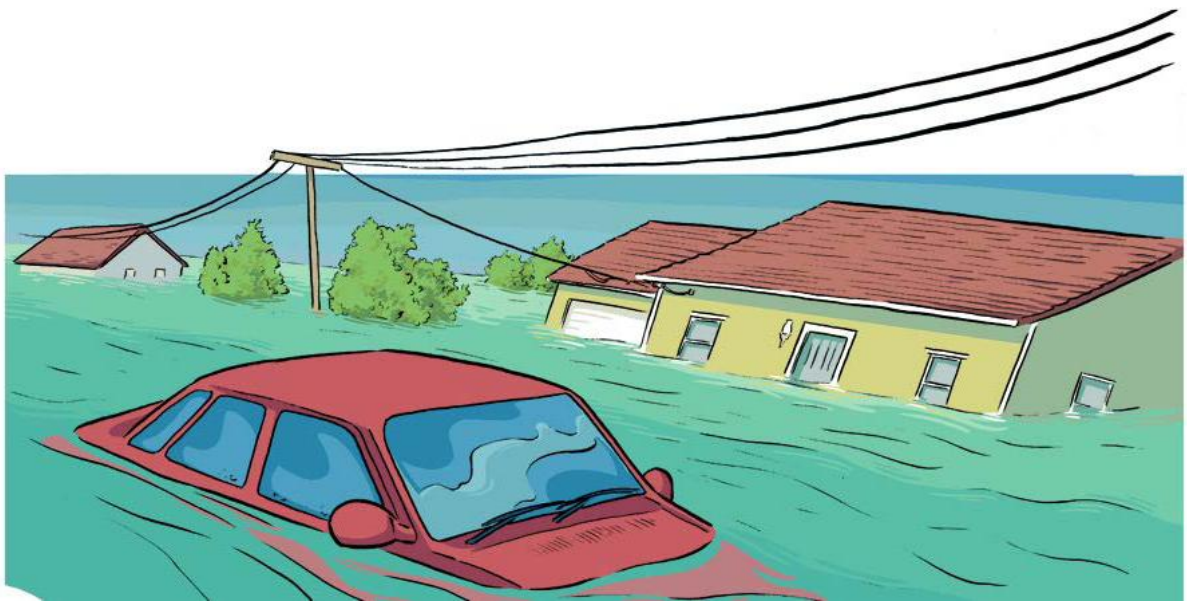
WHAT YOU SHOULD DO

Stay indoors
Ask elders to turn off stove
and gas
Stay away from trees,
electricity poles, etc

WHAT YOU SHOULD NOT DO

Do not play outside

CLOUD BURST AND FLASH FLOOD



Cloud bursts are extremely heavy rainfall that lasts for a short time period but is capable of creating flood conditions. Cloud bursts may cause flash floods.

Flash floods are floods that can happen within minutes or hours of heavy rainfall, a dam or levee failure, or overflowing of drains. The sudden release of water washes away everything that lies on its way which results in heavy damages.

WHAT YOU SHOULD DO ✓

Always stay alert during heavy rains
Stay away from riverside
Move to a higher place if the water level rises

WHAT YOU SHOULD NOT DO



Do not play swim in the river

Do not walk through moving
water

If you are in moving vehicle

ask the driver not to drive
through flooded areas

CYCLONE



A violent wind storm is called a **cyclone**. In some countries it is also known as **typhoons and hurricanes**.

In India, cyclone developed in the Bay of Bengal causes heavy rainfall in those states located near it. This results in heavy damage to life and property.

WHAT YOU SHOULD DO ✓

Stay indoors
Avoid travelling

WHAT YOU SHOULD NOT DO ✗

Do not play outside
Do not swim in the river

AVALANCHE



The sudden movement of large amount of snow sliding down a mountain side is known as **avalanche**. Avalanche buries everything on its way thereby causing danger to life and property.

WHAT YOU SHOULD DO



Do not go alone in snow
covered hillsides
Always have safety tools

WHAT YOU SHOULD NOT DO



Do not play on steep snow
covered slopes

DROUGHT



A **drought** happens when there is no rain for a long period of time. In a drought plants do not grow properly. Because farm crops and animals die due to lack of water, there is less food for people to eat. If a drought lasts a long time, people may also die of starvation and the land may become desert.

WHAT YOU SHOULD DO



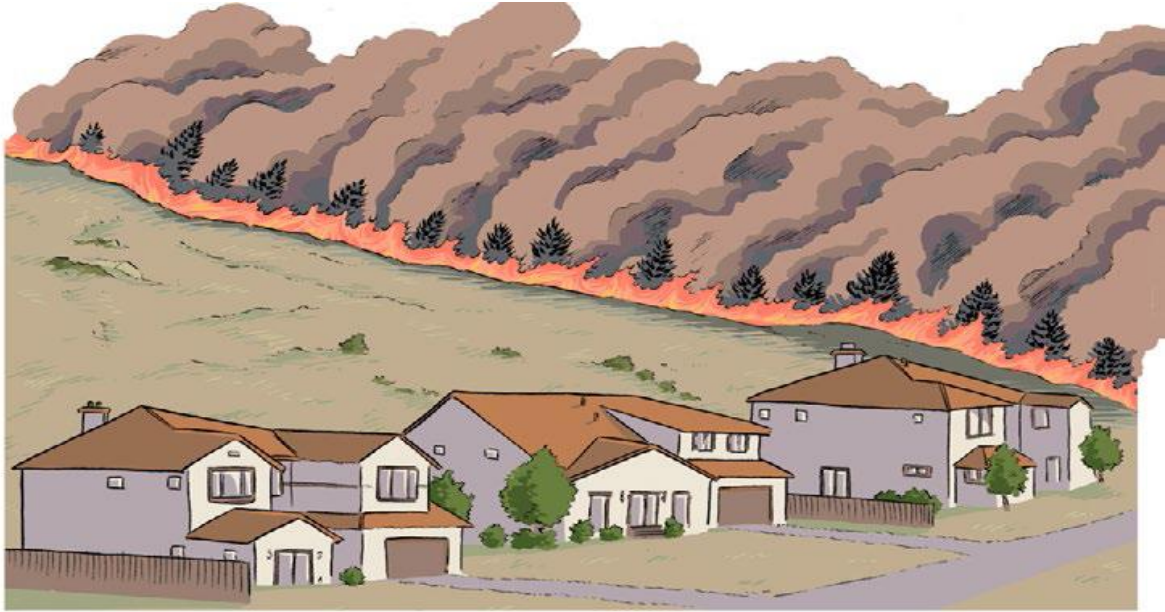
Plant trees
Do not waste water
Turn off the tap properly after
use

WHAT YOU SHOULD NOT DO



Do not leave the tap on while
brushing your teeth

FIRE



Fire can be of two types: house fire and forest fire. Fire can destroy agriculture, houses, as well as kill people and animals. Most fires occur because of carelessness, we should never play with fire.

WHAT YOU SHOULD DO



If someone is on Fire
Stay away from fire area
Stay away from electric wires

WHAT YOU SHOULD NOT DO



Do not play with matchsticks
Do not play near stoves and
fire

ROAD ACCIDENT



Cars, jeeps, trucks, etc collide which is caused by disobeying traffic rules, drinking while driving, carelessness of the driver and carelessness of pedestrians as well.

WHAT YOU SHOULD DO

Always look to the right and
left side before crossing the
road
Dial 100 if you see an
accident

WHAT YOU SHOULD NOT DO

Do not play on the road
Do not run across the road
Do not disturb the driver
while he / she is driving